



If you're ready for a smile that transforms your appearance Invisalign® is the answer! This state-of-the-art orthodontic treatment straightens teeth without the need for traditional fixed braces and is removable and virtually invisible.

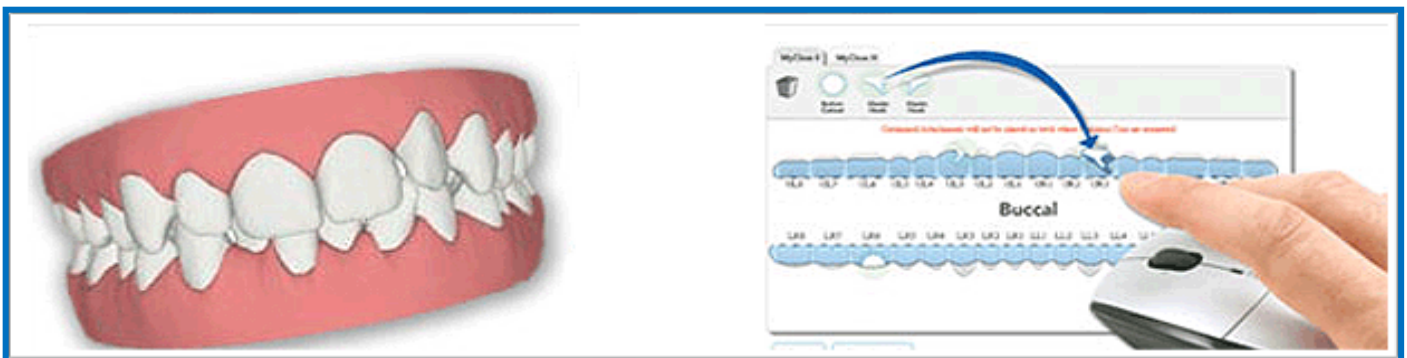
Invisalign consists of a series of nearly invisible, removable aligners that you change every two weeks for the next set of aligners. Each aligner is individually manufactured for your teeth, and your teeth only. As you replace each aligner, your teeth will move – little by little, week by week – until they have straightened to the final position prescribed by your dental practitioner.

What's more, a virtual 3D treatment plan (ClinCheck® treatment plan) shows the series of movements your teeth will go through over the course of the treatment. This allows you to see up front what your teeth are expected to look like at the end of the treatment. Based upon the results of the ClinCheck treatment plan, your custom-made, clear aligners are produced especially for you.

Take a look at the simple steps you and your dentist or orthodontist will take together on the journey towards your brand-new smile.

Stage 1 & 2

During the initial consultation, your dental practitioner will discuss the issues you have with your teeth and explore what kind of results you're hoping to achieve. If Invisalign is suitable for you, a treatment plan will be mapped out with your goals in mind. Your dental practitioner will take impressions of your teeth and will send these to the Invisalign laboratories for processing.



The impressions of your teeth will be digitized in order for your doctor to work with a computerized 3D image of your teeth. Then, your doctor will plan your tooth movements throughout your entire treatment timeline. You'll be able to see a virtual representation of your teeth before, during, and after completion of the Invisalign process so you can see what your smile should look like when you're done with treatment.

Stage 3



Once you and your dental practitioner have agreed to the treatment plan, bespoke aligners are then custom-made for you and have to be worn for approximately two weeks before you switch to the next aligner in the series. While the number of aligners varies for each individual, a full treatment typically includes 18-36 aligners for both the upper and lower teeth which will take approximately 9-18 months depending on your individual case.

Stage 4



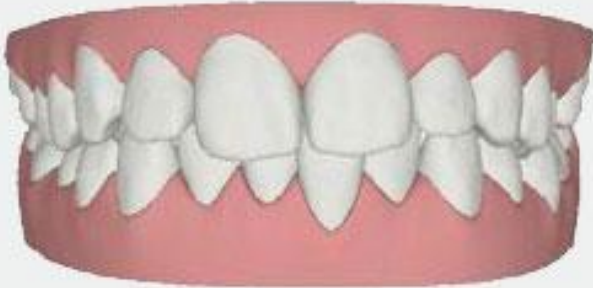
Aligners should be worn day and night, except when eating, brushing or flossing teeth in order to complete your treatment in the timeline determined by you and your dental practitioner. You'll go in for check-ups every 4-6 weeks to monitor your progress and to receive your next series of aligners. During the entire treatment process, you'll notice gradual movement and your teeth will, gradually move into an even and healthy smile.

Will it fit my life?

The Invisalign treatment can slot simply and easily into your daily routine, without any fuss or embarrassment. There are no metal wires or brackets, so no need to worry about mouth irritations, as the aligners are comfortable to wear and can be easily removed for eating, drinking, brushing and flossing as normal.

If it weren't for the remarkable way Invisalign transforms smiles, you'd hardly even notice you're having treatment. As the Invisalign aligners are transparent and difficult to detect when worn, they allow you to straighten your teeth without feeling self-conscious - and should you have an important meeting or event coming up that's causing concern, you can always remove the aligners for that short space of time.

BEFORE



AFTER



For further information, or to make an appointment with Dr June Chander please contact reception on: **01590 672986** or email: enquiries@solent-dental.co.uk